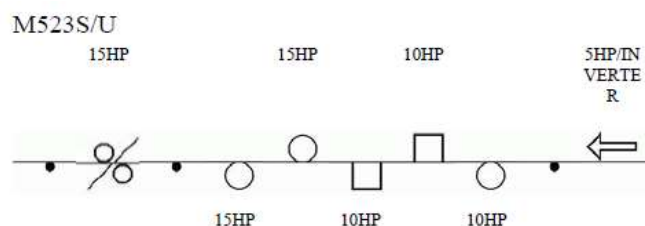


WADKIN BURGREEN | M523/U – 6 Head Moulder with Universal Head



Photo shows 6 head – illustration only



TECHNICAL SPECIFICATION

Working width	15-230 mm
Working thickness	10-150 mm
1st Bottom Head motor	10 HP
Fence Head motor	10 HP
Near Side Head motor	10 HP
1st Top Head motor	15 HP
2nd Top Head motor	15 HP
Universal Head motor	15 HP
Cutting circle of 1st Bottom Head	125-160 mm
Cutting circle of all other heads	112-200 mm
Spindle speeds	6000 rpm
Spindle diameters	40 mm
Feed speed	6-24 m/min
Feed motor	5 HP
Axial range of vertical spindles	40 mm
Adjustment range of horizontal spindles	20 mm

STANDARD MACHINE FEATURES:

- Safety Key operated switch for manual/ automatic set up modes.
- Anti-Kick Back fingers fitted to prevent dangerous ejection.
- Digital read outs to heads providing accurate settings.
- Full sound and safety enclosure.
- Hard chrome tables for long life.
- Independent control of pneumatic pressures.
- Oil lubrication to main tables.
- Edge reference for straight timber.
- Full steel body.
- All feedrollers have independent drive and universal joints.
- Driven bedrollers for enhanced drive.
- Full braking system.
- Heavy duty universal joints.
- High precision spindles.
- Full toolbox.

The machine conforms to CE safety regulations

STANDARD PRICE EX WORKS

All prices are exclusive of VAT (terms 30 % with order and balance prior to dispatch from Leicester)

Prices Quoted are firm for acceptance with 30 days

18 months parts warranty.

Delivery: Installation and commissioning by AMS. Availability will be confirmed at the time of ordering.

30% deposit with order, 70% prior to dispatch from Leicester



